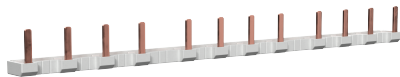


Set of 1-pole phase busbars for 16-gang switch actuator / 8-gang Venetian blind actuator, for Gira One and KNX

8313 00



Set of 1-pole phase busbars for 24-gang switch actuator / 12-gang Venetian blind actuator, for Gira One and KNX

8314 00

Installing the phase busbar

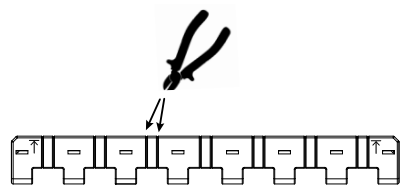


Figure 1: Shorting the phase busbar

- 1 If necessary, cut the phase busbar at the notches using diagonal cutting pliers (see figure 1).
- 2 Attach the end cap to the interface.

[0] Ensure that the device connection terminals are open and the copper pins are inserted in the device connection terminals.

- 3 Align the phase busbar using the printed arrows and plug it into the device connection terminals (see figure 2).
- 4 Screw the phase busbar to the device connection terminals.

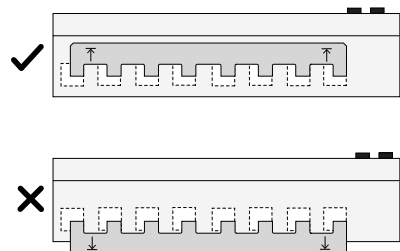


Figure 2: Installing the phase busbar

Accessories

Set of end caps for phase busbar, Order no. 8315 00